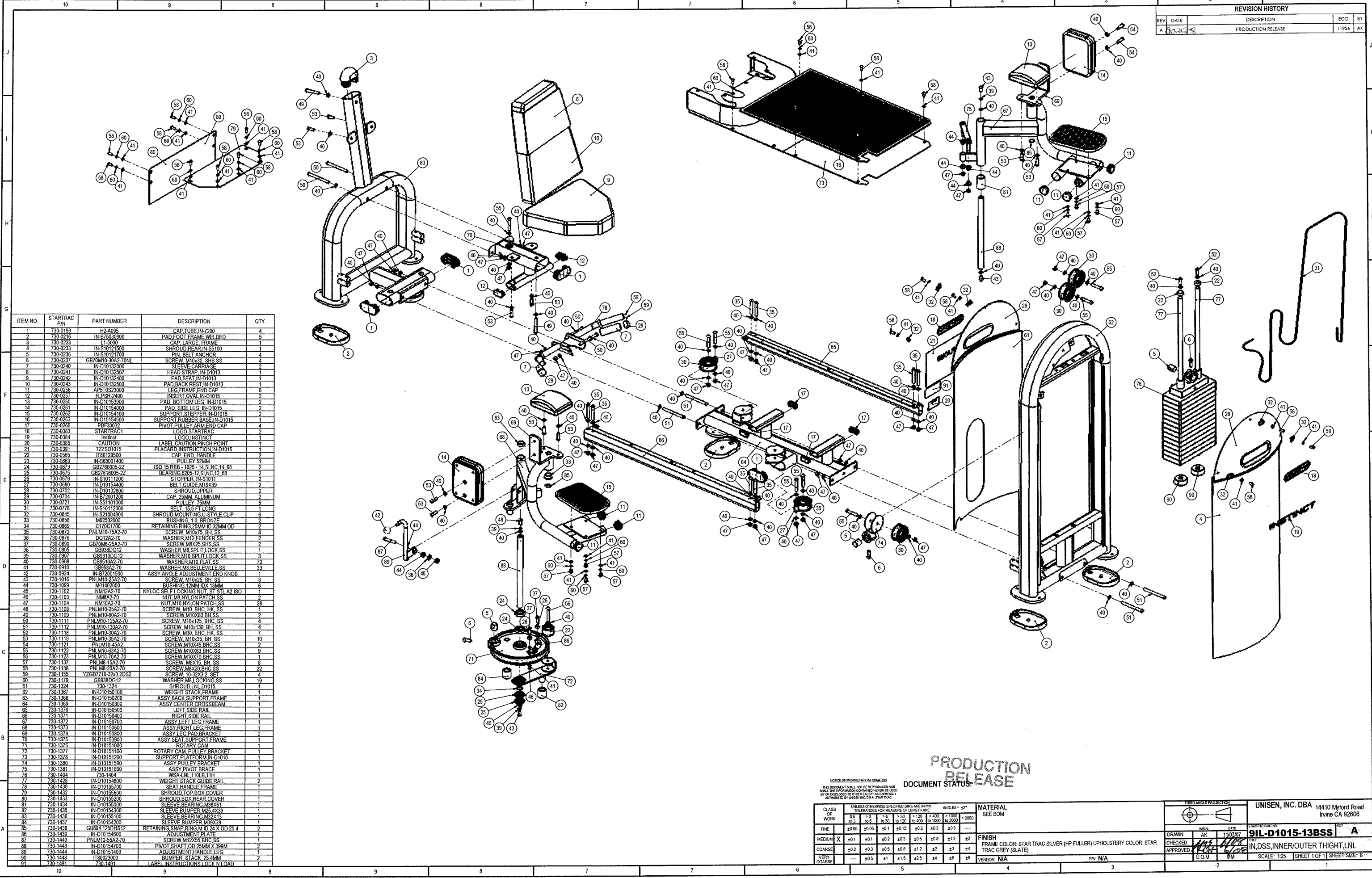


REVISION HISTORY				
REV	DATE	DESCRIPTION	ECO	BY
A	11/07/07	PRODUCTION RELEASE	11956	AK



ITEM NO	STARTRAC P/N	PART NUMBER	DESCRIPTION	QTY.
1	730-0199	H2-A085	CAP TUBE IN-7200	4
2	730-0216	IN-B75039900	PAD FOOT FRAME WELDED	5
3	730-0223	LT-5000	CAP LARGE FRAME	1
4	730-0233	IN-S10121500	SHROUD REAR IN-S100	1
5	730-0236	IN-S10121700	PIN BELT ANCHOR	4
6	730-0237	GB70M10-3042-70NL	SCREW M10x30 SHS SS	4
7	730-0240	IN-D10132000	SLEEVE CARRIAGE	2
8	730-0241	IN-D10132507	HEAD STRAP IN-D1013	1
9	730-0242	IN-D10132400	PAD SEAT IN-D1013	1
10	730-0243	IN-D10132500	PAD BACK REST IN-D1013	1
11	730-0256	AP570S23000	LEG FRAME END CAP	6
12	730-0257	FLPSR-2400	INSERT OVAL IN-D1015	2
13	730-0260	IN-D10153500	PAD BOTTOM LEG IN-D1015	2
14	730-0261	IN-D10154000	PAD SIDE LEG IN-D1015	2
15	730-0262	IN-D10154100	SUPPORT STEPPER IN-D1015	2
16	730-0263	IN-D10154500	SUPPORT RUBBER BASE IN-D1015	1
17	730-0266	PBF30032	PIVOT PULLEY ARM END CAP	4
18	730-0383	STARTRAC1	LOGO STARTRAC	2
19	730-0384	Instinct	LOGO INSTINCT	1
20	730-0385	CAUTION	LABEL CAUTION PINCH POINT	1
21	730-0391	TZ2SD1015	PLACARD INSTRUCTION IN-D1015	1
22	730-0555	IT80129500	CAP END HANDLE	2
23	730-0564	IN-S5201400	PULLEY 52MM	1
24	730-0673	GB276005-22	ISO 15 RBB - 1025 - 14 SIN C 14 68	2
25	730-0675	GB27616005-22	BEARING 6205-12 SI NC 12 68	2
26	730-0679	IN-S10112000	STOPPER IN-S1011	2
27	730-0680	IN-D10132800	BELT GUIDE M8X39	2
28	730-0702	IN-D10132800	SHROUD UPPER	2
29	730-0704	IN-B72001200	CAP 25MM ALUMINUM	2
30	730-0721	IN-S51101000	PULLEY 75MM	6
31	730-0778	IN-S1012000	BELT 15.5 FT LONG	1
32	730-0845	IN-S2404800	SHROUD MOUNTING JUST LIE CLIP	2
33	730-0858	M02B02000	BUSHING 1.625X2.000	1
34	730-0869	C170C1700	RETAINING RING 25MM ID 32MM OD	2
35	730-0872	PNLM10-75A2-70	SCREW M10x75 BH SS	8
36	730-0876	D012A2-70	WASHER M12 FENDER SS	2
37	730-0930	PNLM8-25A2-70	SCREW M8x25 SHS SS	7
38	730-0925	GB38D0G12	WASHER M8 SPLIT LOCK SS	1
39	730-0907	GB9310D0G12	WASHER M10 SPLIT LOCK SS	3
40	730-0908	GB9510A2-70	WASHER M10 FLAT SS	72
41	730-0910	GB950A2-70	WASHER M8 BELLEVILLE SS	33
42	730-0924	IN-B72001500	ASSY ANGLE ADJUSTMENT END KNOB	3
43	730-1016	PNLM10-25A2-70	SCREW M10x25 BH SS	1
44	730-1099	M01402000	BUSHING 12MM IDX 13MM	6
45	730-1102	NM12A2-70	NYLOC SELF LOCKING NUT ST STL A2 ISO	1
46	730-1103	NM4A2-70	NUT M8 NYL ON PATCH SS	2
47	730-1104	NM10A2-70	NUT M10 NYL ON PATCH SS	28
48	730-1108	PNLM10-25A2-70	SCREW M10 BHC HK SS	1
49	730-1109	PNLM10-80A2-70	SCREW M10x80 BH SS	2
50	730-1111	PNLM10-125A2-70	SCREW M10x125 BHC SS	4
51	730-1112	PNLM10-130A2-70	SCREW M10x130 BH SS	4
52	730-1118	PNLM10-35A2-70	SCREW M10 BHC HK SS	7
53	730-1119	PNLM10-35A2-70	SCREW M10x35 BH SS	10
54	730-1121	PNLM10-45A2	SCREW M10x45 BHC SS	2
55	730-1122	PNLM10-63A2-70	SCREW M10x63 BHC SS	9
56	730-1123	PNLM10-70A2-70	SCREW M10x70 BHC SS	1
57	730-1137	PNLM8-15A2-70	SCREW M8x15 BH SS	8
58	730-1138	PNLM8-20A2-70	SCREW M8x20 BHC SS	22
59	730-1155	YZGB7710-32x3 2DS2	SCREW 10-32X3 2 SET	4
60	730-1179	GB980D0G12	WASHER M8 LOCKING SS	19
61	730-1324	730-1324	SHROUD LNL D1015	1
62	730-1367	IN-D10150100	WEIGHT STACK FRAME	1
63	730-1368	IN-D10150200	ASSY BACK SUPPORT FRAME	1
64	730-1369	IN-D10150300	ASSY CENTER CROSSBEAM	1
65	730-1370	IN-D10150500	LEFT SIDE RAIL	1
66	730-1371	IN-D10150600	RIGHT SIDE RAIL	1
67	730-1372	IN-D10150700	ASSY LEFT LEG FRAME	1
68	730-1373	IN-D10150800	ASSY RIGHT LEG FRAME	1
69	730-1374	IN-D10150900	ASSY LEG PAD BRACKET	2
70	730-1375	IN-D10150900	ASSY SEAT SUPPORT FRAME	1
71	730-1376	IN-D10151000	ROTARY CAM	1
72	730-1377	IN-D10151100	ROTARY CAM PULLEY BRACKET	1
73	730-1378	IN-D10151200	SUPPORT PLATFORM IN-D1015	1
74	730-1380	IN-D10151500	ASSY PULLEY BRACKET	1
75	730-1381	IN-D10151600	ASSY PIVOT BRACKET	1
76	730-1404	730-1404	WSP LNL 110L 11H	1
77	730-1428	IN-D10154800	WEIGHT STACK GUIDE RAIL	2
78	730-1430	IN-D10155700	SEAT HANDLE FRAME	1
79	730-1432	IN-D10155800	SHROUD TOP BOX COVER	1
80	730-1433	IN-D10155900	SHROUD BOX REAR COVER	1
81	730-1434	IN-D10155000	SLEEVE BEARING M8X15	1
82	730-1435	IN-D10154300	SLEEVE BUMPER M25 4X39	1
83	730-1436	IN-D10155100	SLEEVE BEARING M32X13	1
84	730-1437	IN-D10154200	SLEEVE BUMPER M39X39	1
85	730-1438	GB984 120X1512	RETAINING SNAP RING M 12 X 15 OD 25.4	2
86	730-1439	IN-D10154600	ADJUSTMENT PLATE	2
87	730-1440	PNLM12-55A2-70	SCREW M12x55 BHC SS	1
88	730-1443	IN-D10154700	PIVOT SHAFT OD 25MM X 399M	2
89	730-1444	IN-D10151400	ADJUSTMENT HANDLE LEG	2
90	730-1448	IT8023000	BUMPER SLATE 15.4MM	1
91	730-1481	730-1481	LABEL INSTRUCTIONS LOCK N LOAD	1

PRODUCTION RELEASE
DOCUMENT STATUS:

NOTICE OF PROPRIETARY INFORMATION
THIS DOCUMENT SHALL NOT BE REPRODUCED OR
SHALL THE INFORMATION CONTAINED HEREIN BE USED
BY OR DISCLOSED TO OTHER EXCEPT AS EXPRESSLY
AUTHORIZED BY UNISER, U.S.A. STARTRAC

CLASS OF WORK	TOLERANCES FOR MEASURE OF LENGTH ARE							MATERIAL SEE BOM
	0.5	1.3	2.5	3.8	7.6	12.7	25.4	
FINE	±0.05	±0.05	±0.1	±0.15	±0.2	±0.3	±0.5	
MEDIUM	±0.1	±0.1	±0.2	±0.3	±0.5	±0.8	±1.2	
COARSE	±0.2	±0.3	±0.5	±0.8	±1.2	±2	±3	
VERY COARSE	---	±0.5	±1	±1.5	±2.5	±4	±6	

UNISER, INC. DBA	14410 Myford Road	REV
	Irvine CA 92606	A
DRAWN AK		DATE 11/07/07
CHECKED [Signature]		FILE IN-DSS INNER/OUTER THIGHT LNL
APPROVED [Signature]		SCALE 1:25 SHEET 1 OF 1 SHEET SIZE B